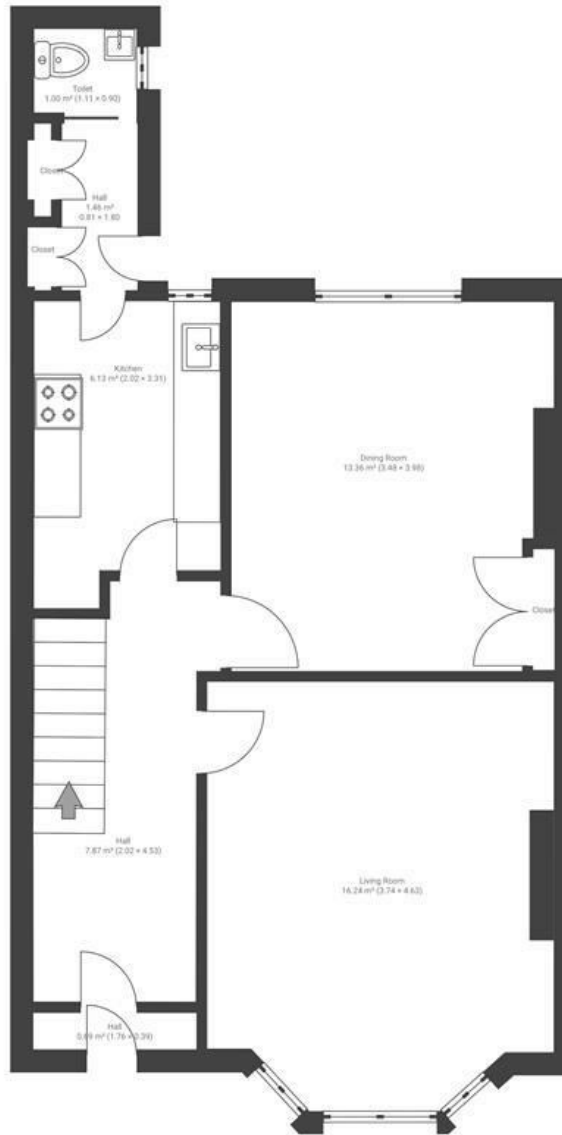


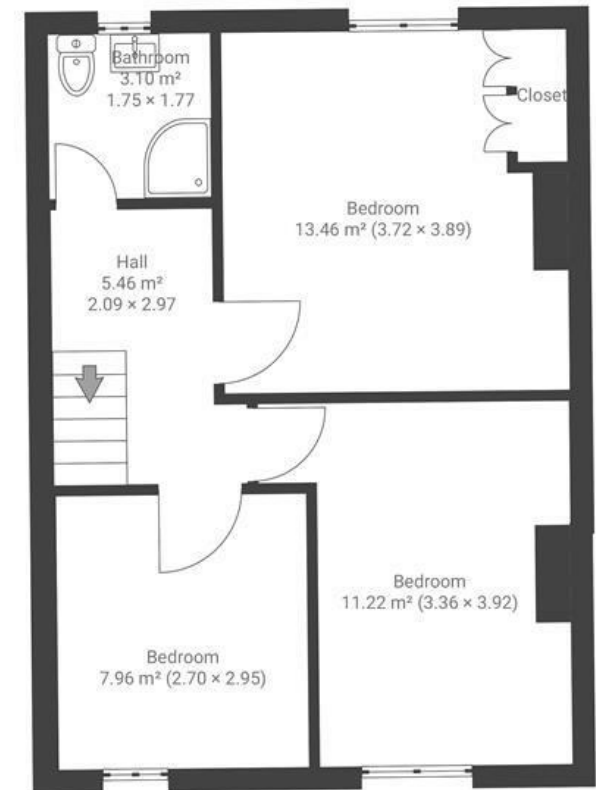
Muller Road

HORFIELD

APPROXIMATE FLOOR AREA
94 SQM / 1011 SQFT



GROUND FLOOR



FIRST FLOOR

Boardwalk

Muller Road

HORFIELD, BRISTOL



£350,000



3 Bedrooms



BS7 9RH



2 Bathrooms

"We have rented out the property now for a few years, but our tenants have always loved the location and everything it offers being so close to Gloucester Road. Its also very easy to get in and out of the city, as we are not from the M32, and having Muller Recreational Ground virtually in the back garden has been lovely."

